

## 2 Way Transceiver Module

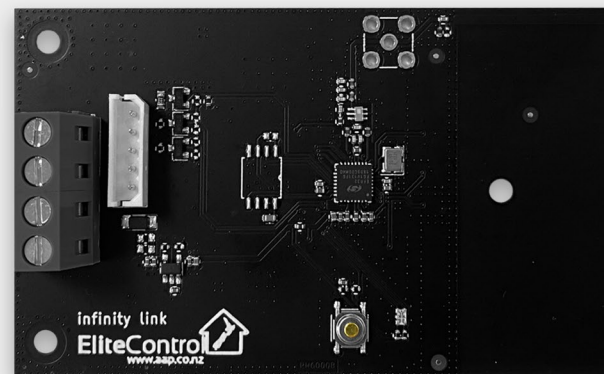
infinity series long range wireless allows installers to specify professional, correctly positioned products without excessive labour, unpleasant trunking or conduit. With up to 500m range, almost any site can be accurately secured

The infinity link is an intelligent interface module that connects other infinity series wireless devices to any ESL, ESL-2 or ESXv2 control panel



### Features

- 5 year warranty
- Frequency: 915MHz
- Input voltage: 10-15VDC
- Built in high gain PCB antenna
- Simple plug in bus connection
- Connects to ESL, ESL-2 & ESXv2
- infinity 2 way encrypted wireless protocol
- Supports infinity input, motion, remote & siren
- Bicolour LED status indicator
- Dimensions: 90 x 52 x 7mm



### Compatibility

ESL-2 or ESX v2 control panel with plug in infinity link